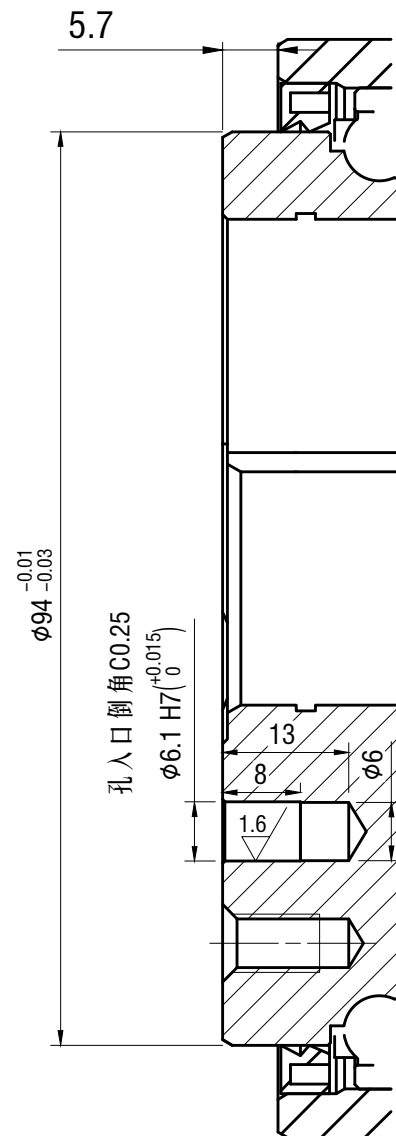


6-M10 ∇ 14.5
底孔6- $\phi 8.5 \nabla 18.5$
孔入口倒角C2

3-M6 ∇ 10
底孔3- $\phi 5 \nabla 13$
孔入口倒角C1.5

$\phi 73 \pm 0.1$



5.7

$\phi 94$
 $^{-0.01}_{-0.03}$

孔入口倒角C0.25
 $\phi 6.1$ H7($^{+0.015}_{0}$)

13
8
1.6
 $\phi 6$